

TELEPHONE

CALL TWO WORKING DAYS
BEFORE YOU DIG
1-800-STAKE-IT
1-800-782-5348
(OUTSIDE MARICOPA COUNTY)

NOTE:
CONTRACTOR TO VERIFY LOCATION AND ELEVATION OF
EXISTING UTILITIES PRIOR TO CONSTRUCTION. CONTRACTOR
IS RESPONSIBLE FOR COORDINATING ANY NECESSARY
UTILITY RELOCATION WITH THE APPLICABLE UTILITY.

PROJECT BENCH MARK:
DATUM: NAVD-88
CITY OF PRESCOTT GRID COORDINATE SYSTEM

SPECIAL NOTE:
THE CITY OF PRESCOTT STANDARD DETAILS AND SPECIFICATIONS
MEET MINIMUM DESIGN REQUIREMENTS OF THE EQUIVALENT MAG
SPECIFICATIONS AND STANDARD DETAILS.

APPROVED TRAFFIC CONTROL PLAN AND R.O.W. PERMIT MUST BE OBTAINED FROM PUBLIC WORKS PRIOR TO BEGINNING WORK IN THE R.O.W.

CITY OF PRESCOTT PUBLIC WORKS IS RESPONSIBLE FOR INSPECTION OF IMPROVEMENTS IN THE R.O.W. CITY PROPERTY AND DESIGNATED PUBLIC UTILITY EASEMENTS ONLY. ALL OTHER IMPROVEMENTS (ON-SITE) SHALL BE INDEPENDENTLY INSPECTED.

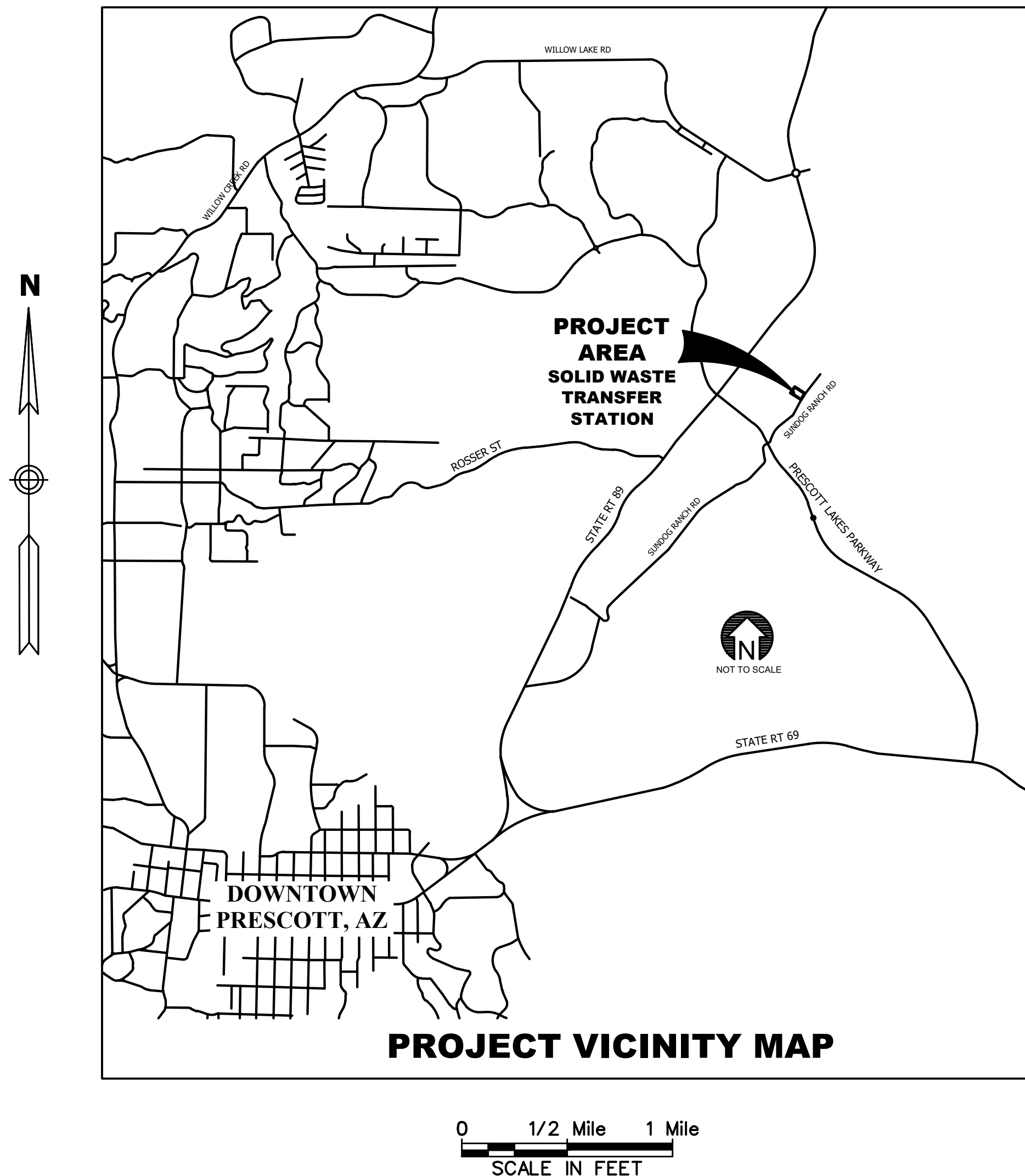
BASIS OF BEARING

SURVEY CONTROL IS THE CITY OF PRESCOTT SURVEY DATUM, ALSO BEING ARIZONA STATE PLANE ZONE, ARIZONA CENTRAL 0202, NAD 83, NAVD 88 USING GEOID MODEL GEOID99 (CONUS), CITY OF PRESCOTT - CONVERSION FROM STATE PLANE:

NORTHING; (STATE PLANE X 1.000329975) - 701,456.0090

EASTING; (STATE PLANE X 1.000329975) + 69,457.2499

STATE PLANE CONVERSION FROM CITY OF PRESCOTT NORTHING:
(CITY OF PRESCOTT + 701,456.0090) X 0.999670134, EASTING:
(CITY OF PRESCOTT - 69,457.2499) X 0.999670134



MAYOR
PHIL GOODE

CITY COUNCIL
CONNIE CANTELME
CATHY RUSING
ERIC MOORE
BRANDON MONTOYA
LOIS FRUHWIRTH
TED GAMBONI

SHEET INDEX

SHEET INDEX	
SHEET NO.	DESCRIPTION
1	TITLE SHEET
2	NOTES
3	GEOMETRICS
4-5	STANDARD DETAILS
6	EROSION CONTROL
7	SITE PLAN
8	8" SANITARY SEWER
9	PAVING -ZONE 7
10-11	PAVING-ZONE 4
12	SCALE & BOOTH REMOVAL

REVIEWED BY

CITY OF PRESCOTT PUBLIC WORKS

AS-BUILT CERTIFICATION:

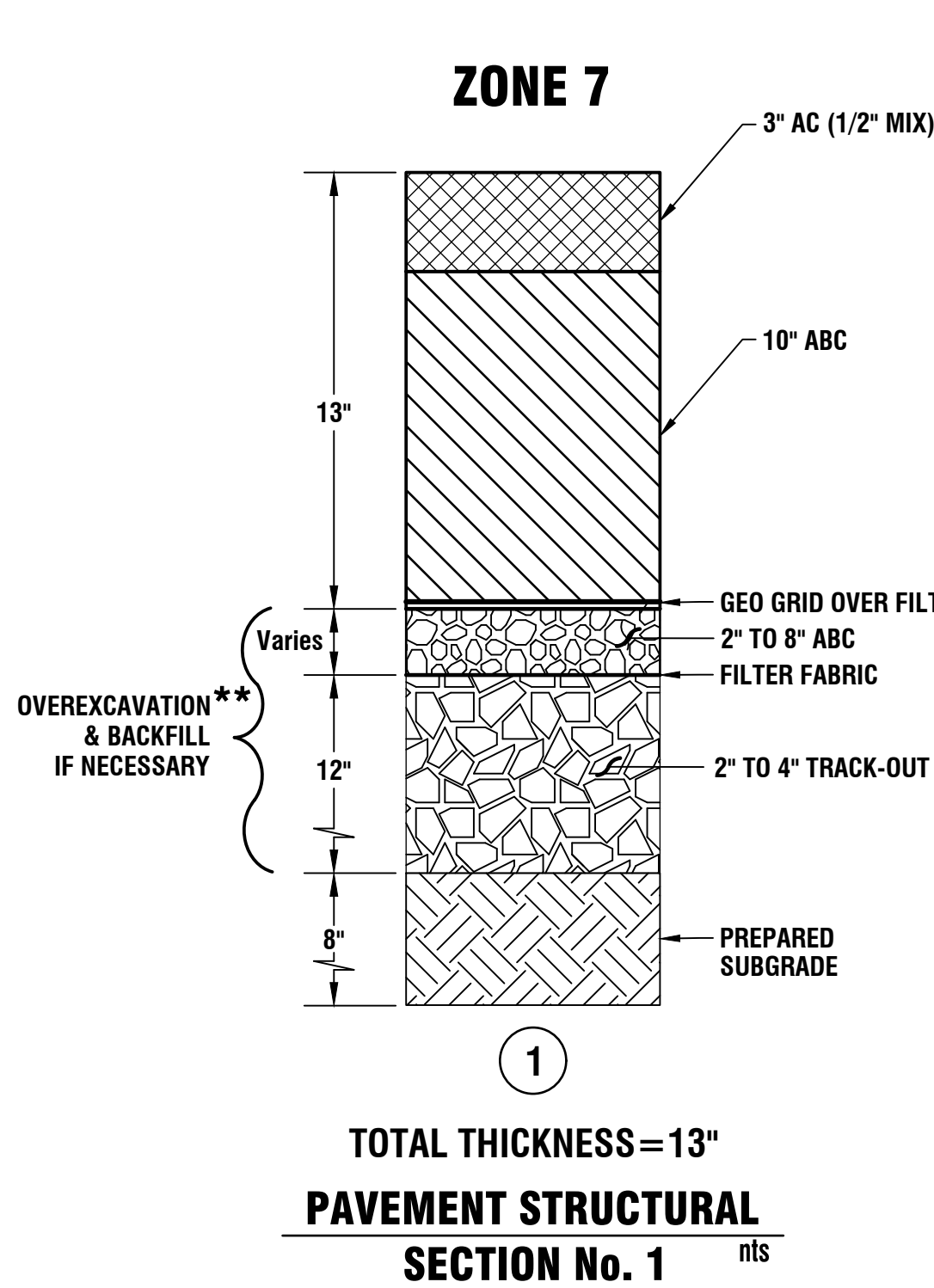
I HEREBY CERTIFY TO THE BEST OF MY KNOWLEDGE, INFORMATION AND BELIEF, THAT THIS PROJECT HAS BEEN COMPLETED IN SUBSTANTIAL CONFORMANCE WITH THE APPROVED PLANS, SPECIFICATIONS AND REFERENCED STANDARDS, EXCEPT AS SHOWN HEREON: THAT THESE AS-BUILT PLANS REFLECT THE POSITION OF CONSTRUCTED FACILITIES BASED ON FIELD MEASUREMENTS AND THAT THE MATERIALS USED IN CONSTRUCTION ARE AS SHOWN BASED ON FIELD OBSERVATION AND TEST RESULTS.

THIS CERTIFICATION DOES NOT WARRANT MATERIALS, WORKMANSHIP, METHODS OF CONSTRUCTION OR OTHER ITEMS AFFECTING THE WARRANTY OF THIS PROJECT TO THE CITY OF PRESCOTT, USERS OF THIS INFORMATION ARE ADVISED TO OBTAIN INDEPENDENT VERIFICATION OF ACTUAL CONDITIONS.

REGISTERED PROFESSIONAL ENGINEER (CIVIL)

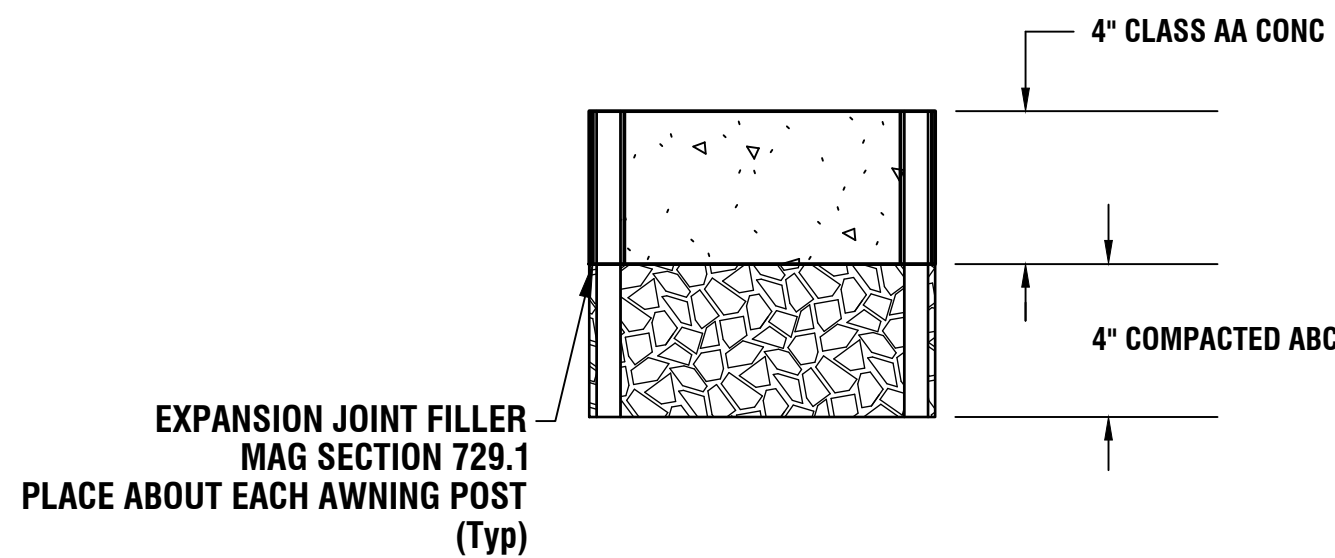
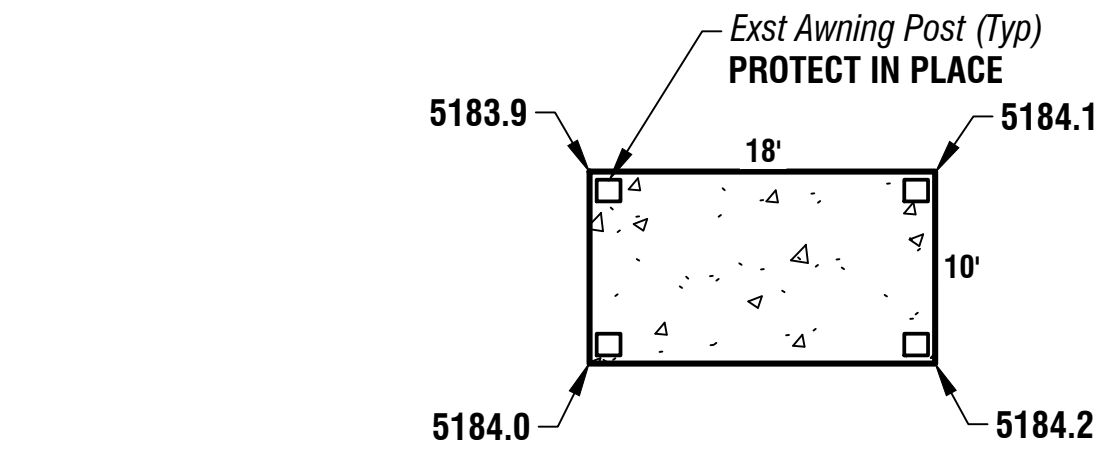
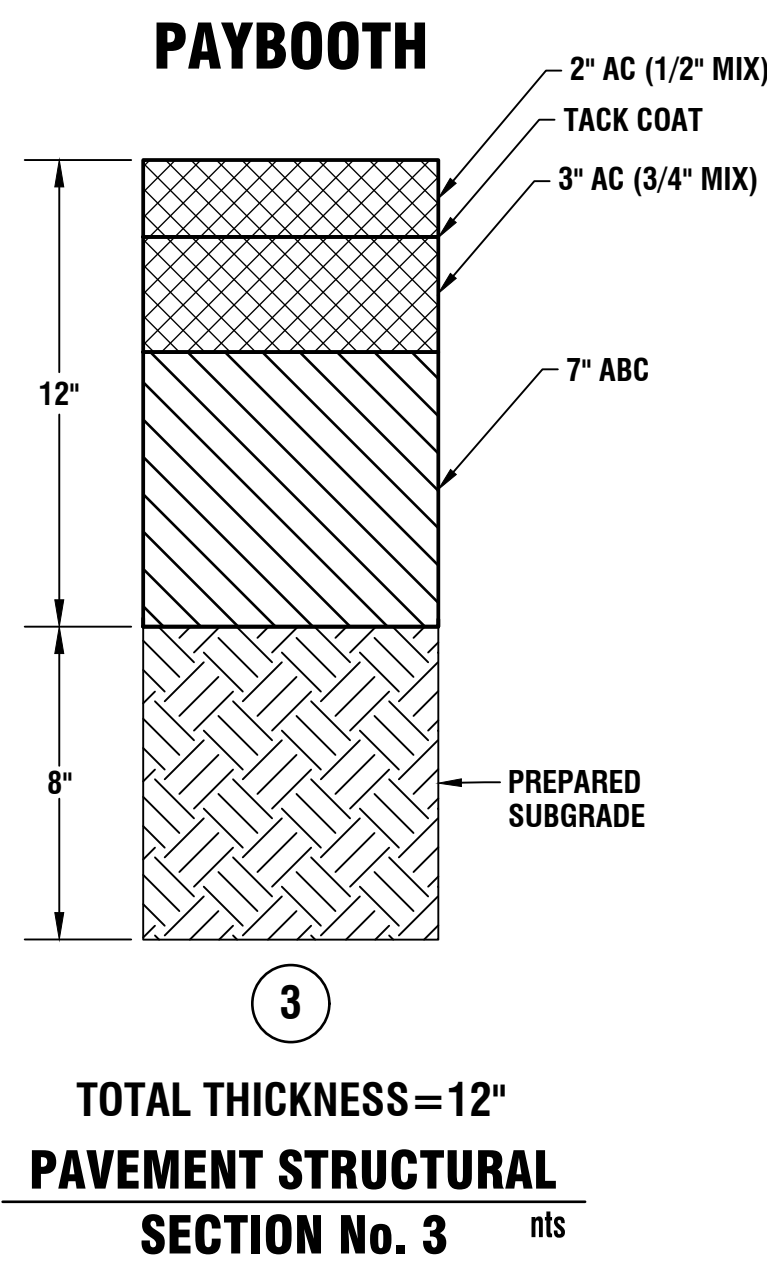
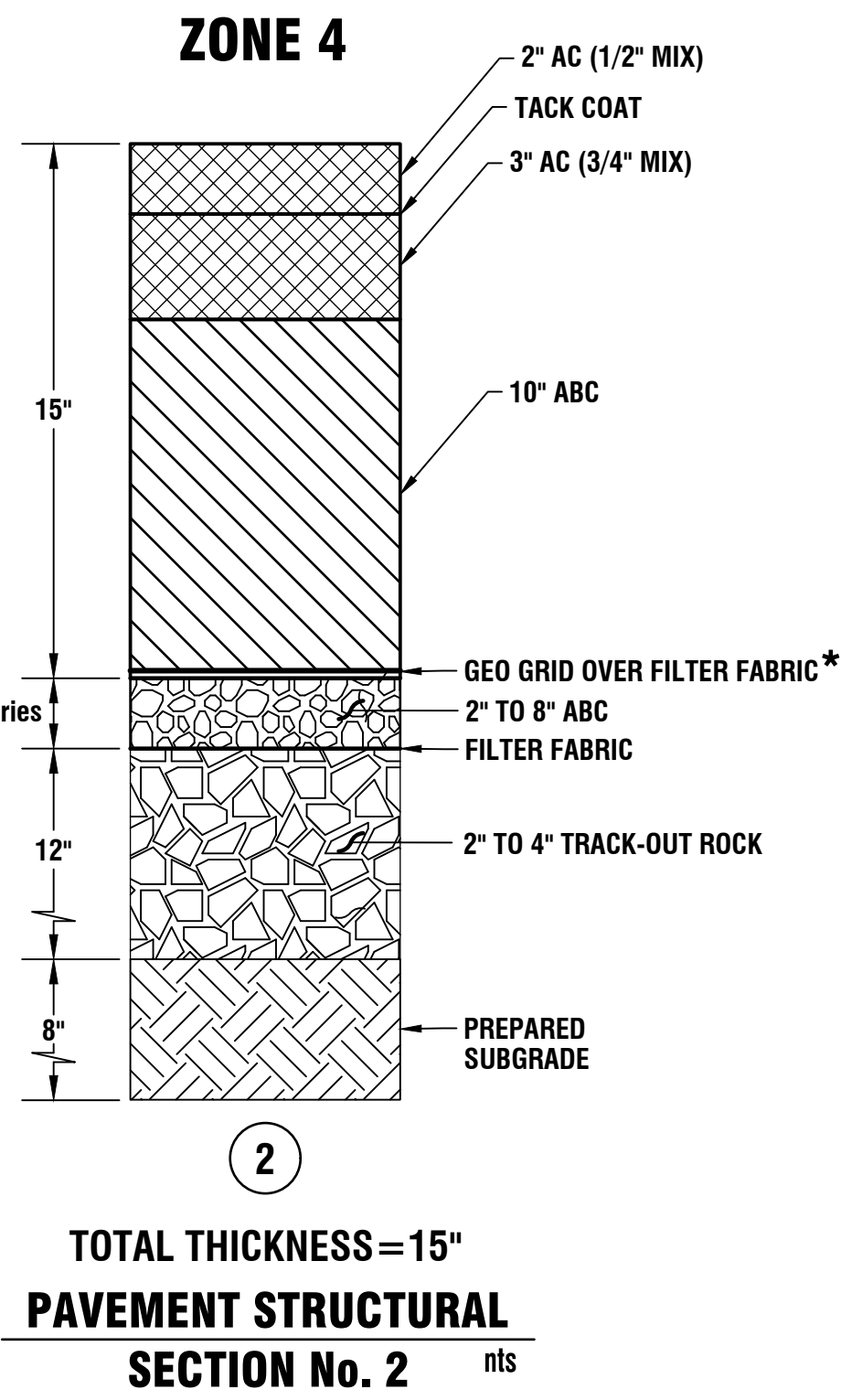
SIGNATURE _____ DATE _____

k:\554\554xfrpv\c3d\sheet\sd-554xfrpv-standard details.dwg

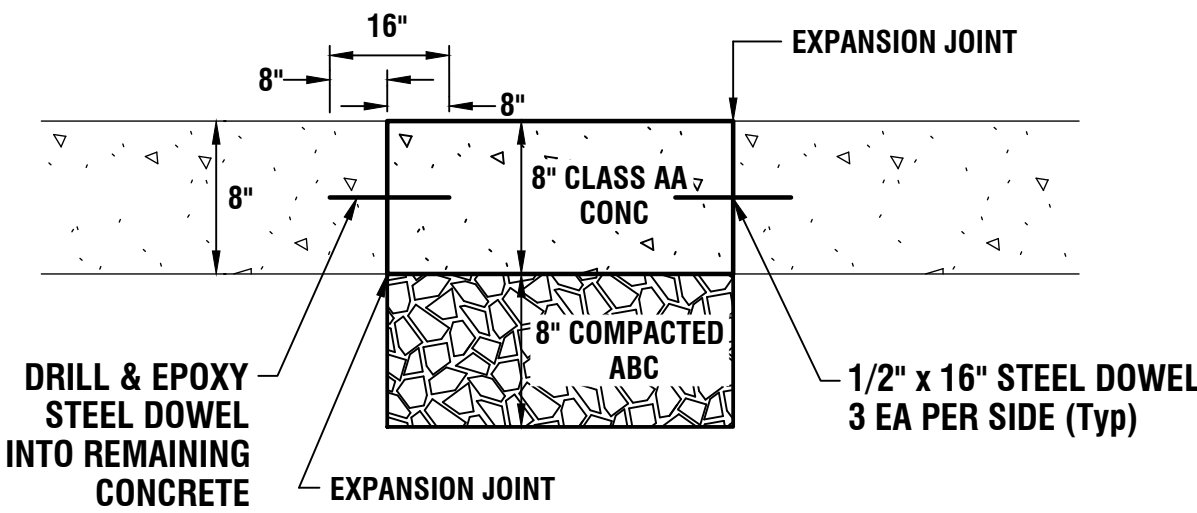
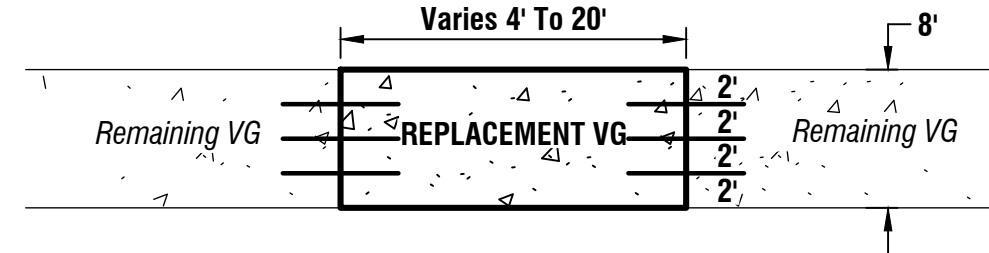


* GEOGRID OVER FILTER FABRIC
REQUIRED IN BOTH ZONES

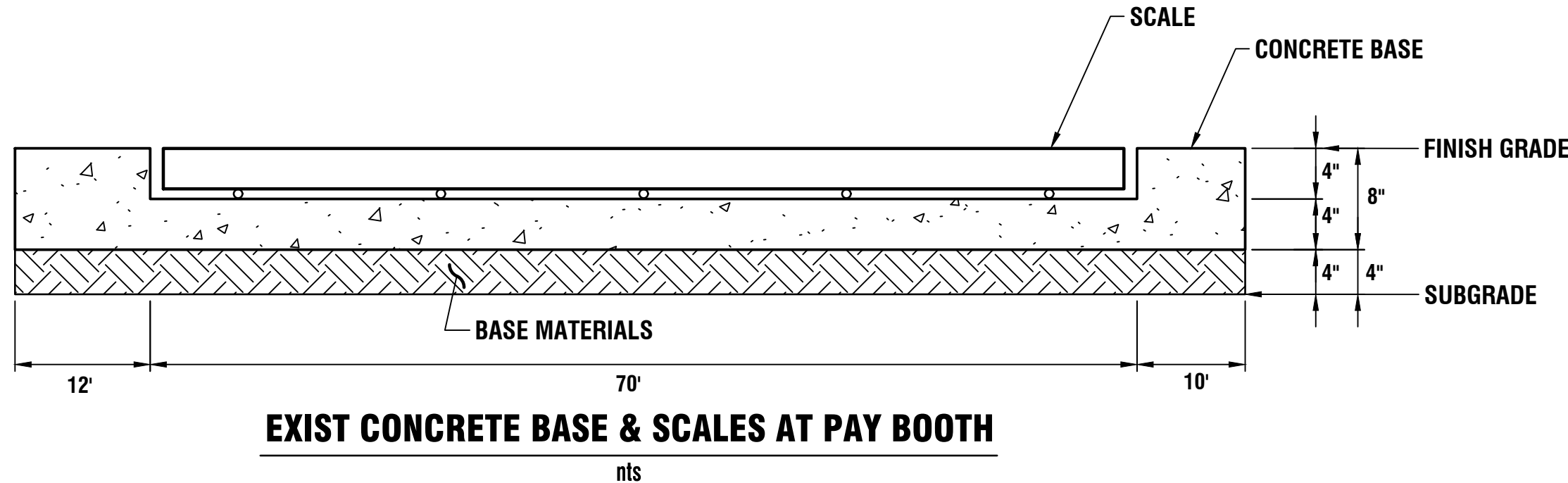
** PROVISIONARY ITEMS
(MAY NOT BE USED IN CONTRACT)
OVER EXCAVATION & BACKFILL
DEPENDANT ON ENCOUNTERED
MOISTURE CONDITIONS
AS DESCRIBED IN ETC SOILS REPORT



RAMADA CONCRETE DETAIL
ZONE 4 PAVING nts



VALLEY GUTTER REPLACEMENT DETAIL
QCSD 240Q-1 nts



Earthwork Summary	
Roadway Excavation	
Zone 4	1,670 CY
Zone 7	230 CY
Paybooth	60 CY
Sub Total	1,960 CY
Swell (10%)	200 CY
Total Roadway Excavation	2,160 CY
Unsuitable Material Excavation Provisional Item (May Not Be Used In Contract)	
Zone 4	1,770 CY
Zone 7	300 CY
Sub Total	2,070 CY
Swell (10%)	210 CY
Total Unsuitable Material Excavation	2,280 CY

DWG. NO. 554xfrpv
DATE: Jan 2025
SHEET NO. 4
OF 12

DAVA & ASSOCIATES, INC.
Transfer Station Pavement Improvements Phase 2
Typical Sections

DAVA & ASSOCIATES, INC.
PLANNING & ASSOCIATES, INC.
310 East Union Street
Prescott, AZ 86303
(928) 778-7381
Email: mail@daconline.com

PREPARED BY gth
CHECKED BY gmb
FOR COP

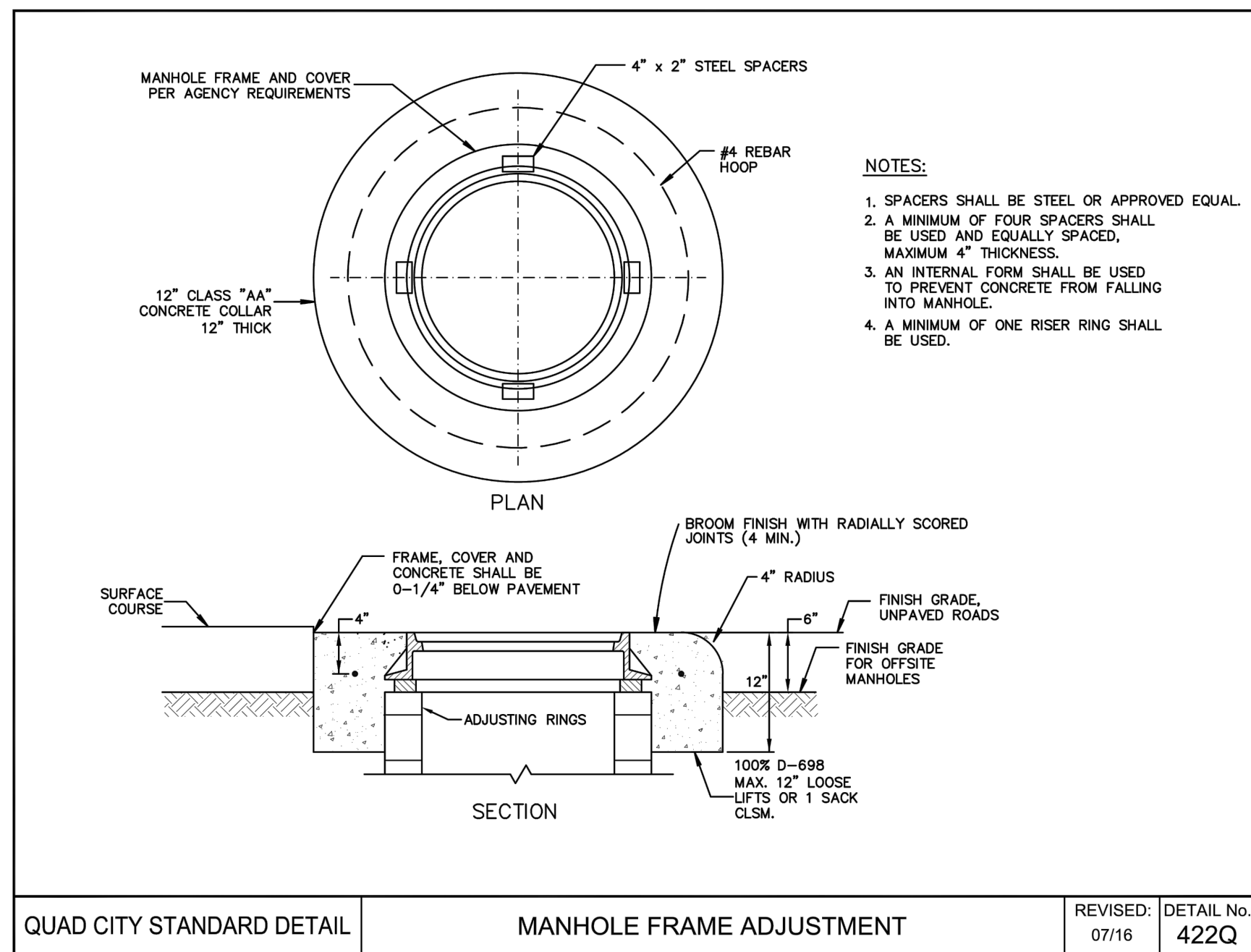
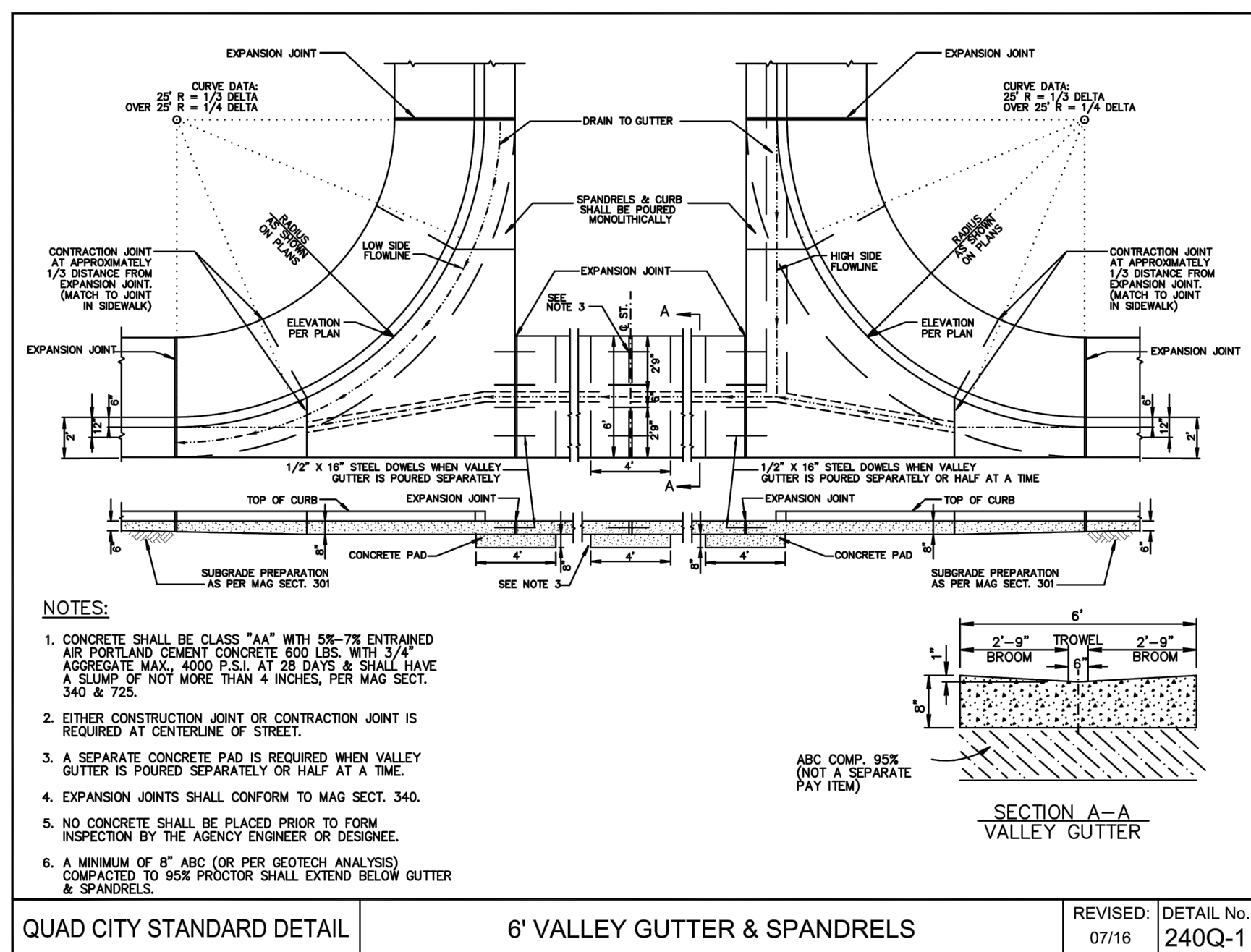
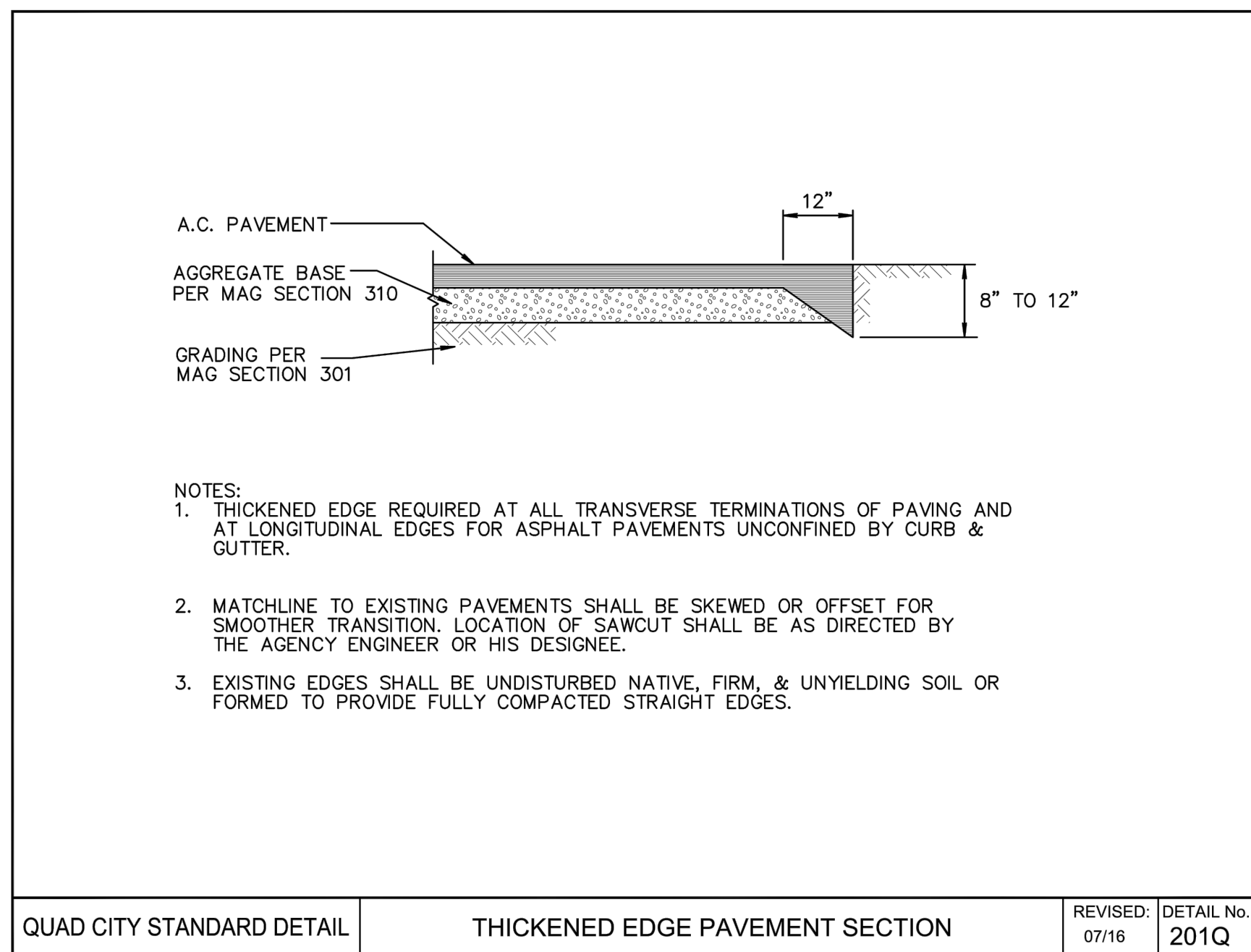
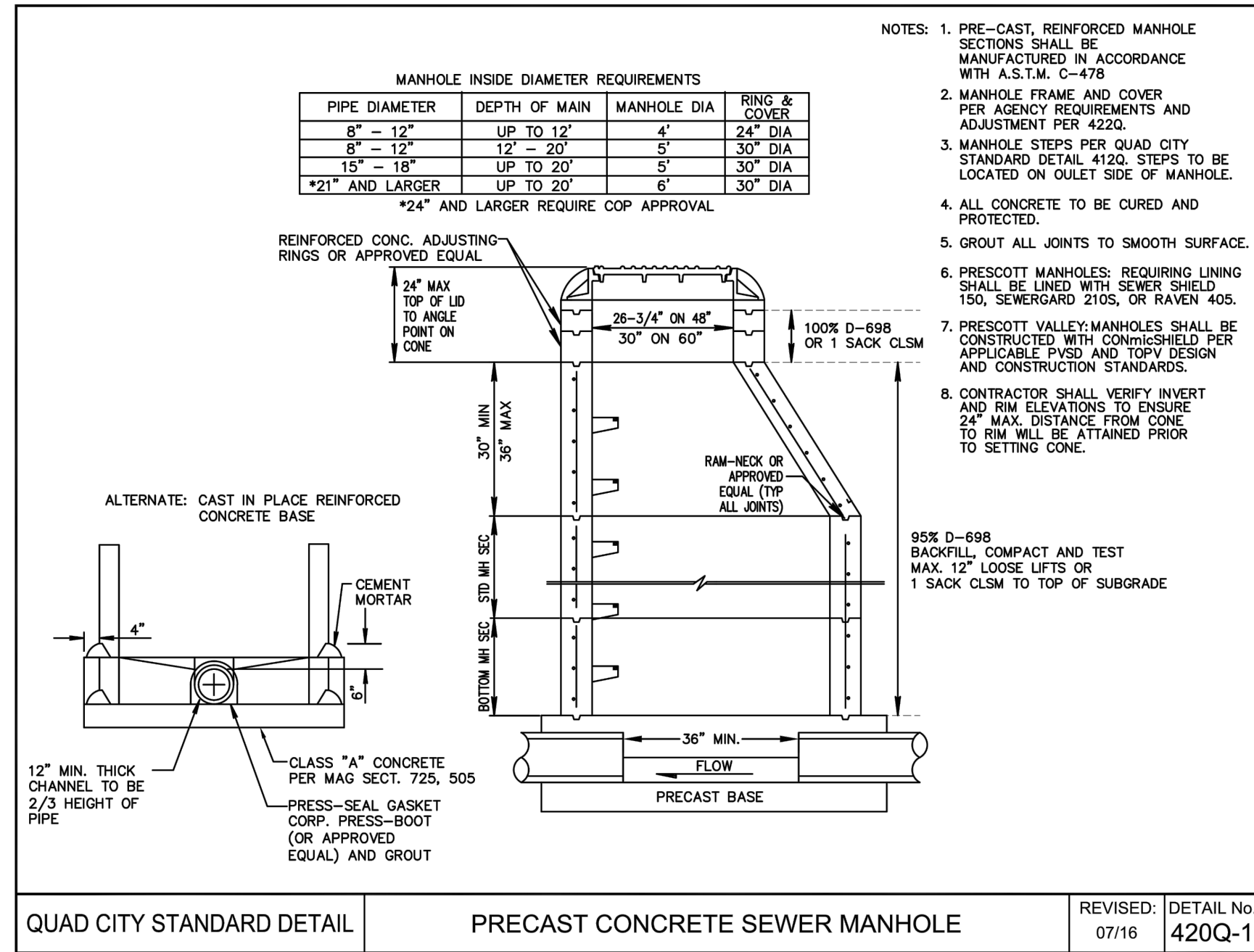
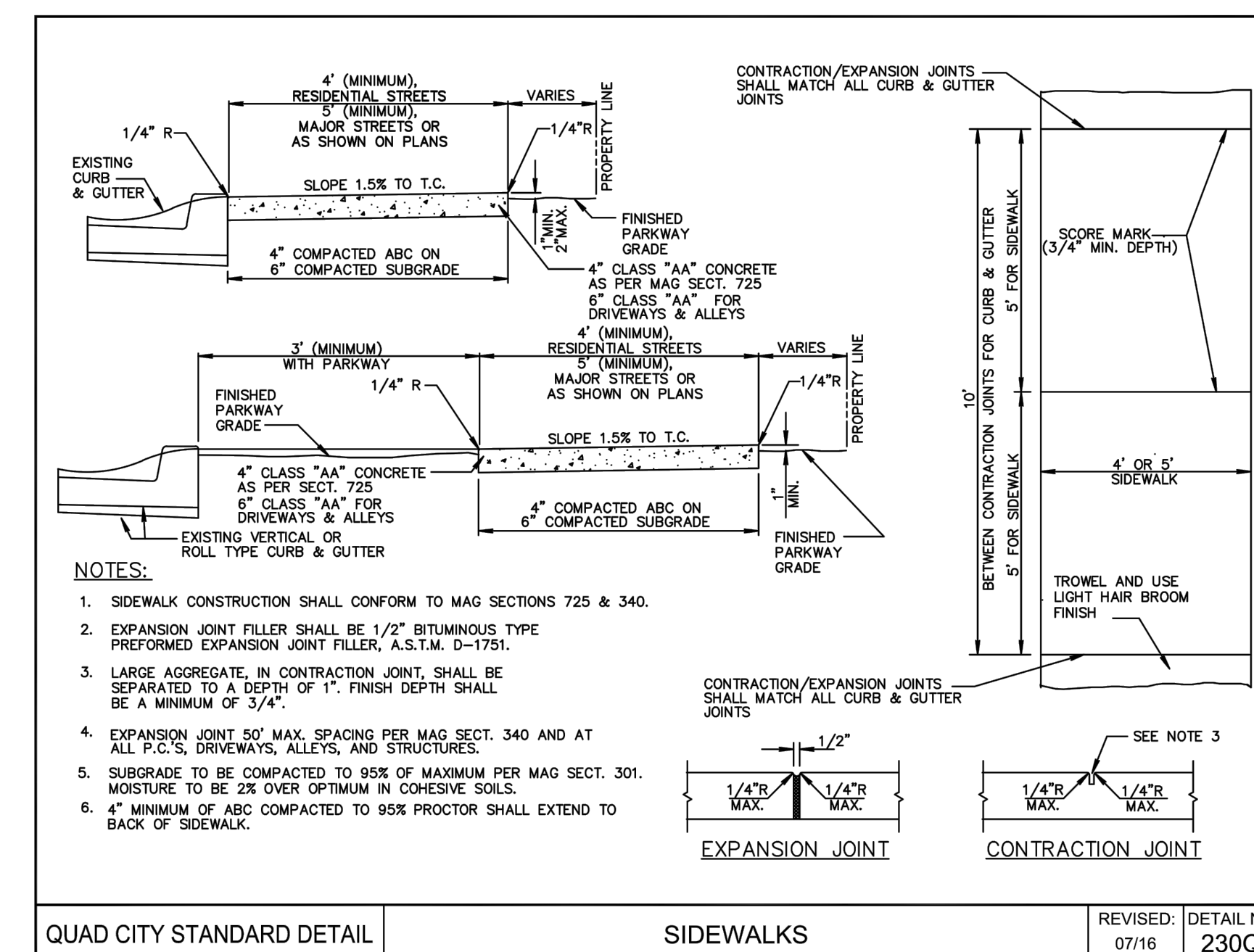
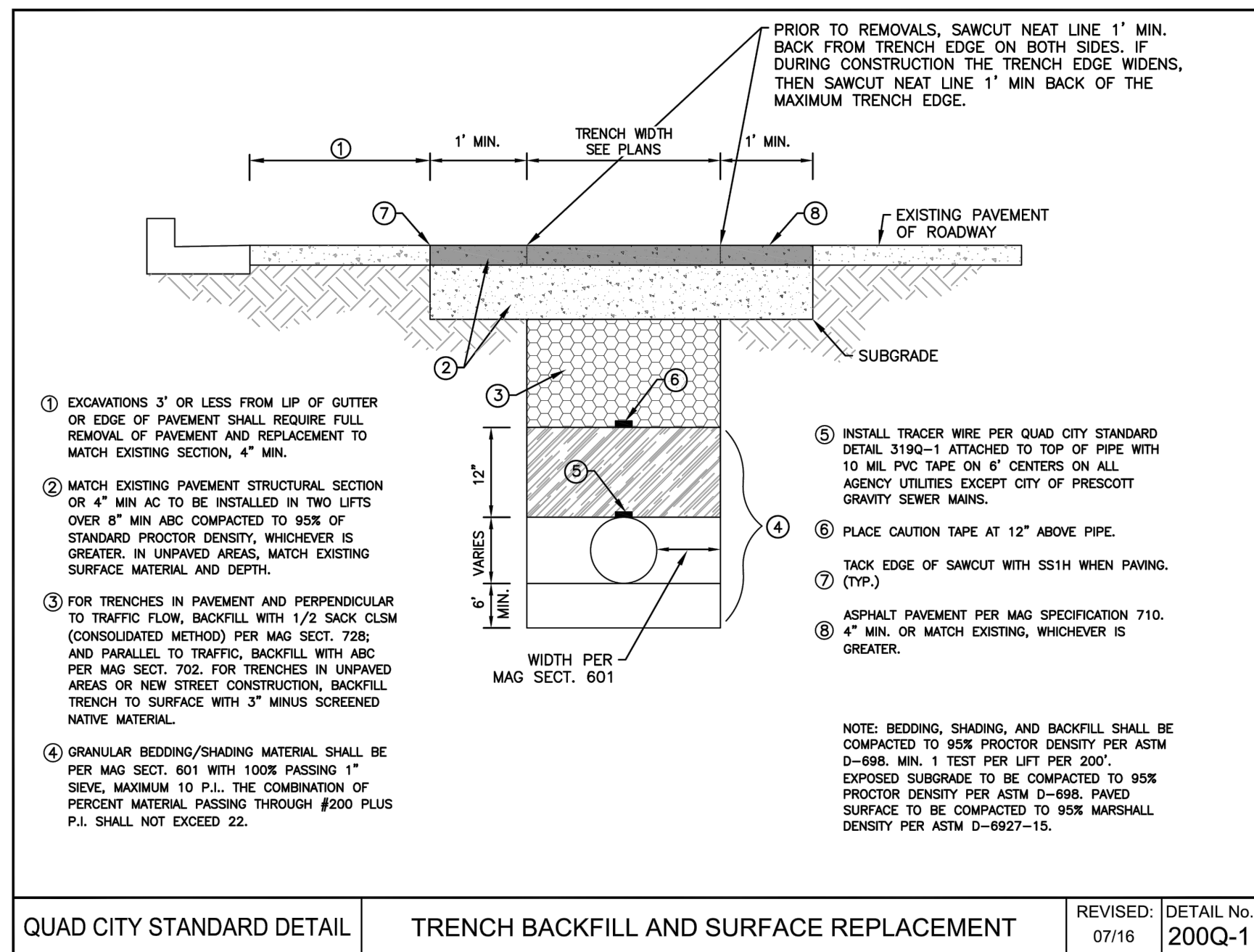
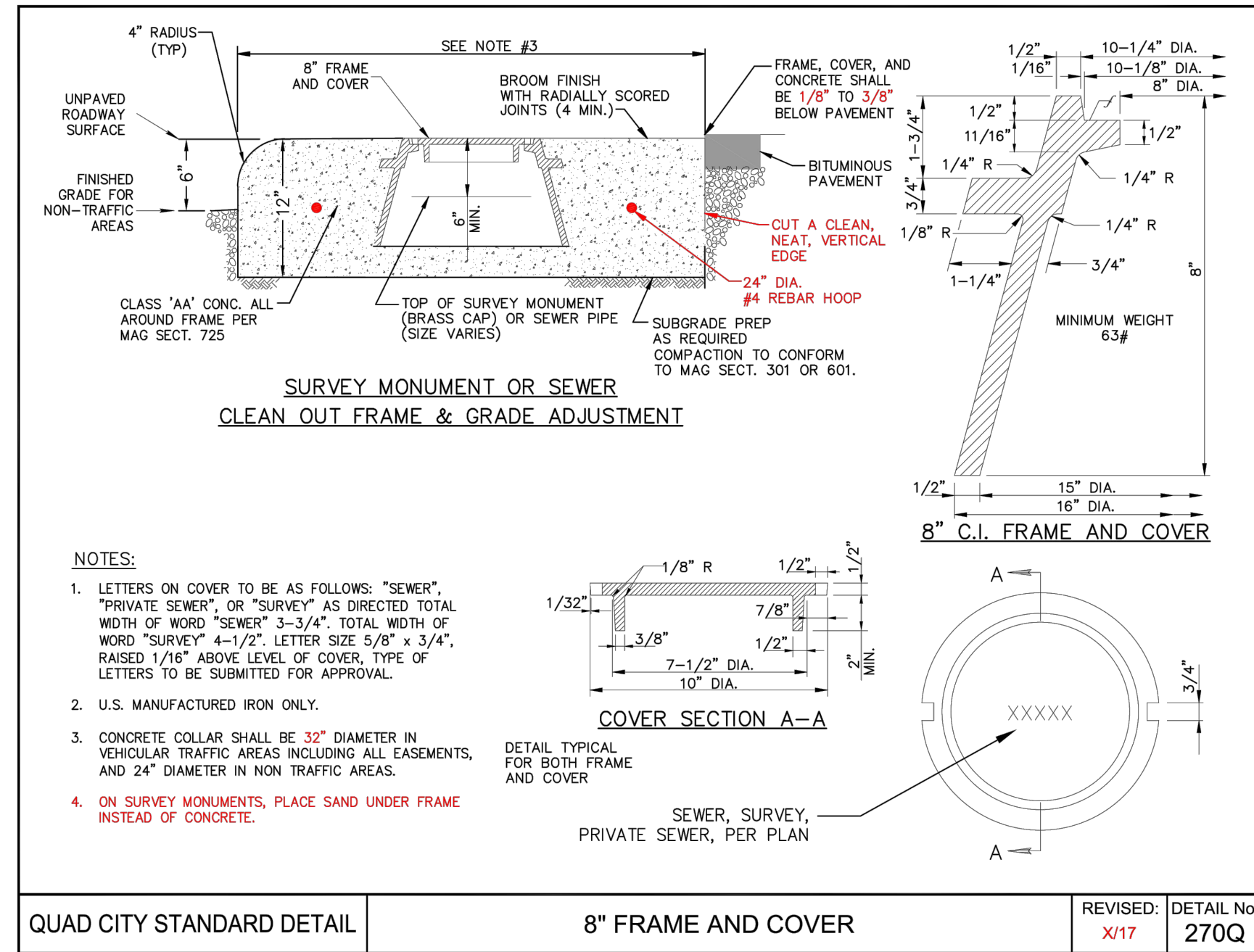
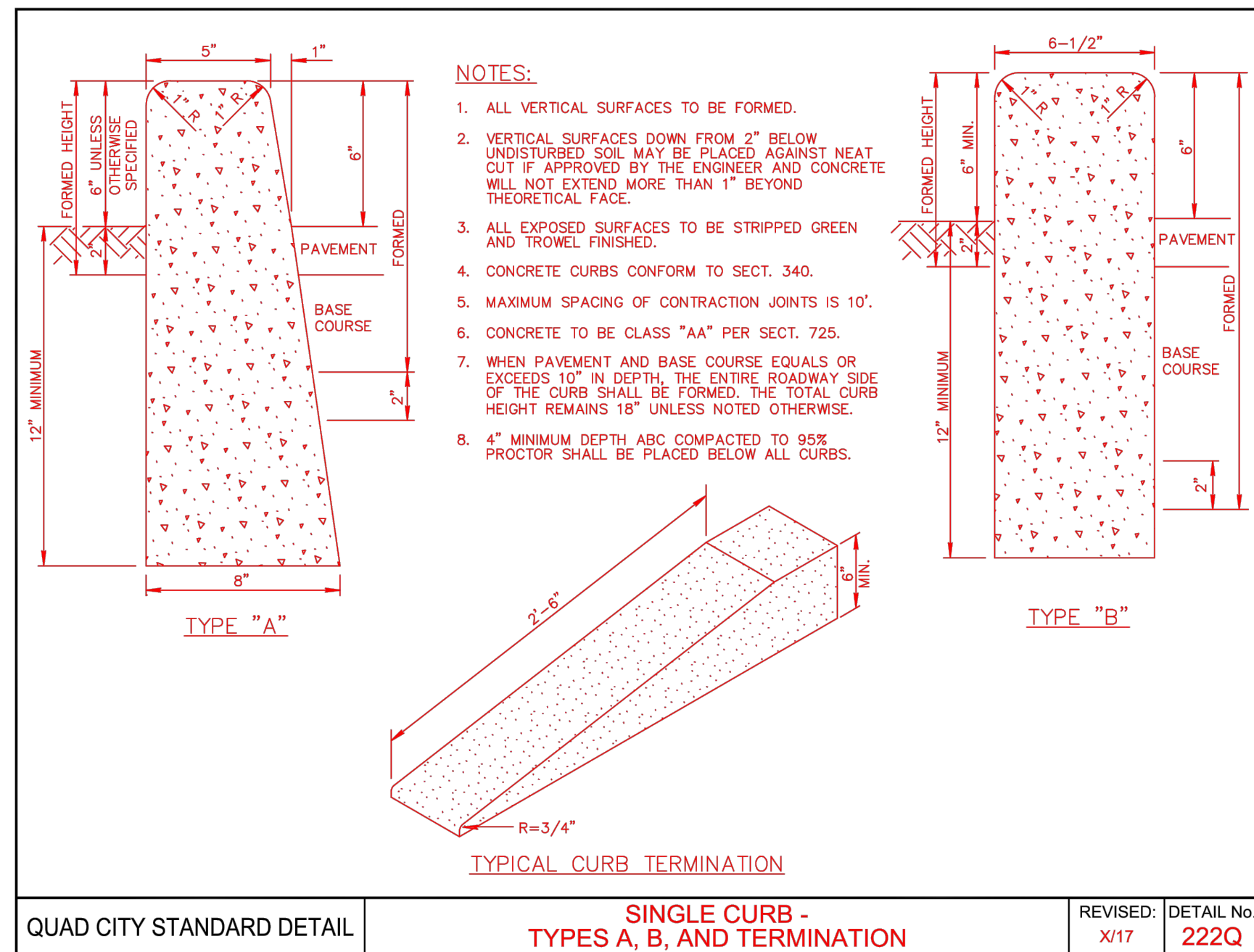
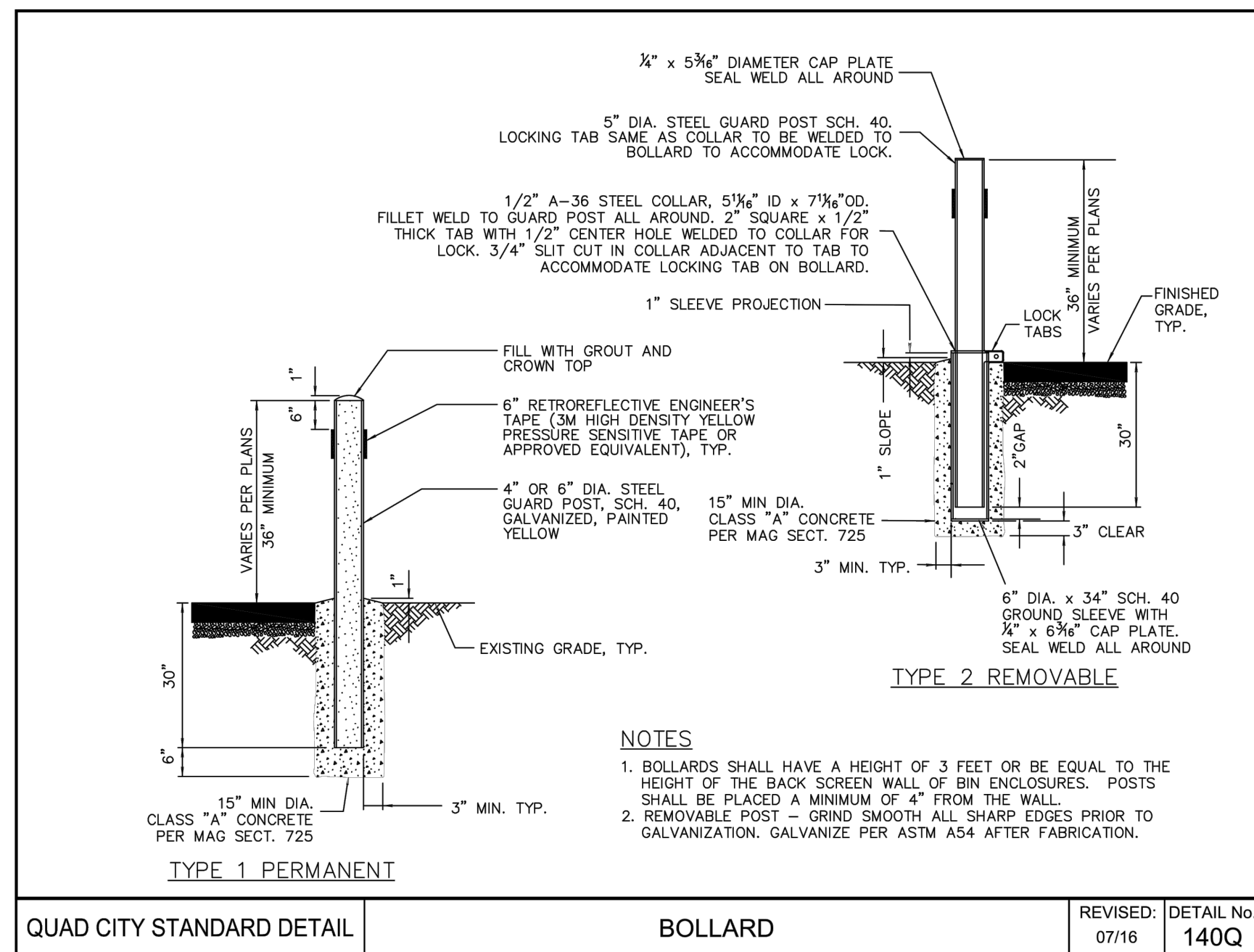
Professional Engineer (Civil)
STATE OF ARIZONA
GORDON M. GROVERS
No. 10000
Exp. 12/31/2025

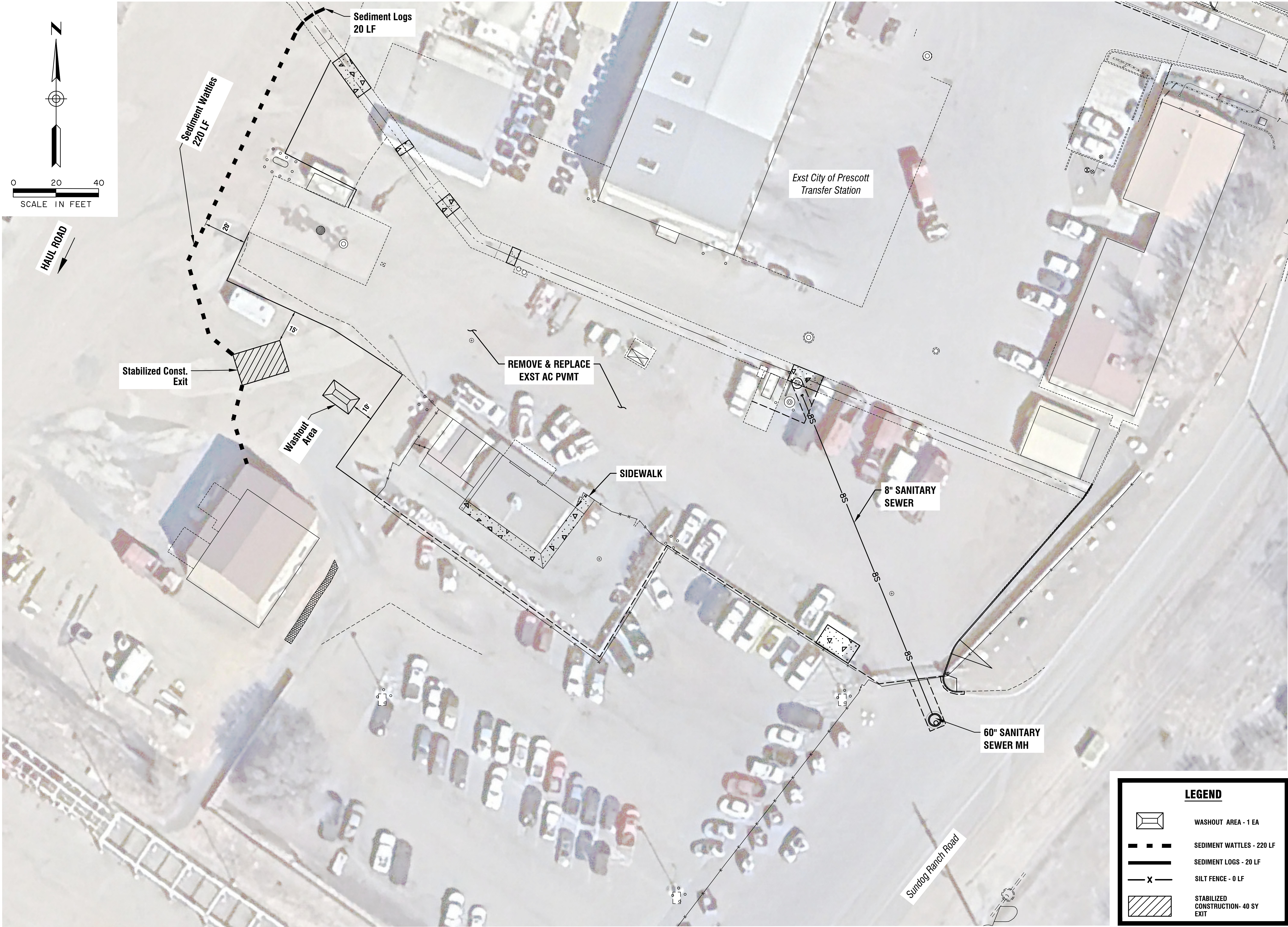
Note: The private engineer signing these plans is responsible for assuring the design complies with all applicable laws, rules, and regulations of the state of Arizona, and for the design herein, in the event of discrepancies arising after city approval or during construction, the private engineer shall be responsible for obtaining an acceptable solution and revising the plans for approval by the City of Prescott.

APPRV DATE CITY

REVISIONS

NO. BY DATE ENGINEER





DWG. NO. 554xfrpv
DATE: Jan 2025
SHEET NO. 6 of 12

DATA & ASSOCIATES, INC.
Transfer Station Pavement Improvements Phase 2
Erosion Control Plan

DAVA & ASSOCIATES, INC.
PLANNING & ENGINEERING
SURVEYING
310 East Union Street
Prescott, AZ 86305
Email: mail@datavai.com

PREPARED BY: gth
CHECKED BY: gmb
FOR: COP

Professional Engineer (Civil)
No. 2008
GORDON M.
BOWERS
The State of Arizona
USA

Gordon M. Bowers

Note: The private engineer signing these plans is responsible for the accuracy of the design herein. In the event of discrepancies arising after city approval or during construction, the engineer shall be responsible for determining an acceptable solution and revising the plans for approval by the City of Prescott.

NO.	BY	DATE	REVISIONS	CITY
1				
2				
3				
4				
5				
6				
7				
8				
9				
10				
11				
12				
13				
14				
15				
16				
17				
18				
19				
20				
21				
22				
23				
24				
25				
26				
27				
28				
29				
30				
31				
32				
33				
34				
35				
36				
37				
38				
39				
40				
41				
42				
43				
44				
45				
46				
47				
48				
49				
50				
51				
52				
53				
54				
55				
56				
57				
58				
59				
60				
61				
62				
63				
64				
65				
66				
67				
68				
69				
70				
71				
72				
73				
74				
75				
76				
77				
78				
79				
80				
81				
82				
83				
84				
85				
86				
87				
88				
89				
90				
91				
92				
93				
94				
95				
96				
97				
98				
99				
100				

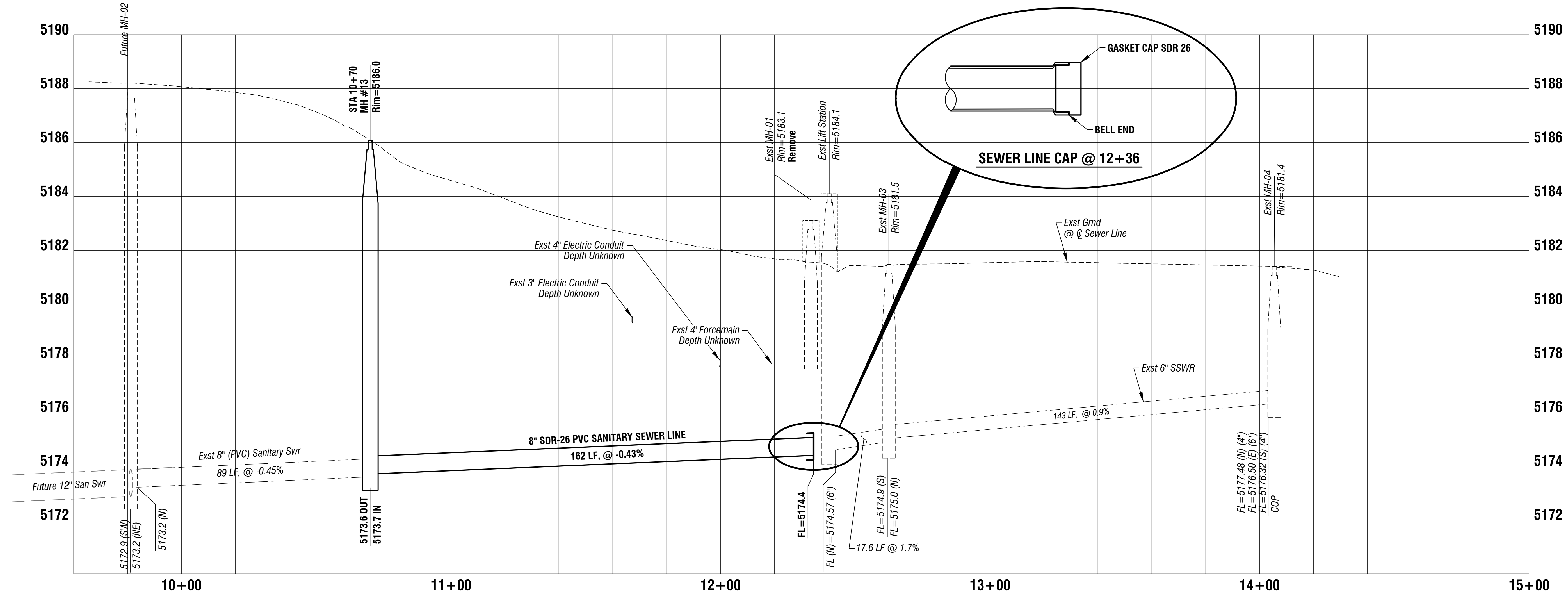
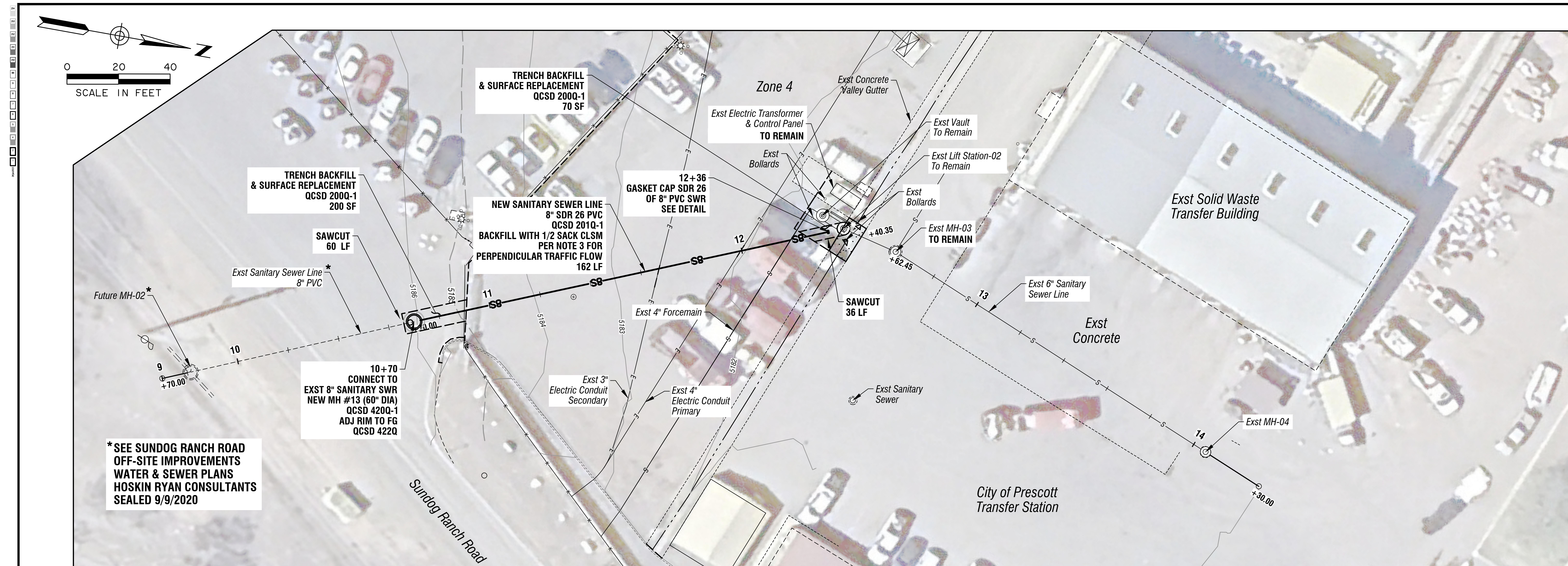
CITY OF PRESCOTT
2025

k:\554\554xfrpv\c3d\ sheets\sp-554xfrpv-site plan.dwg

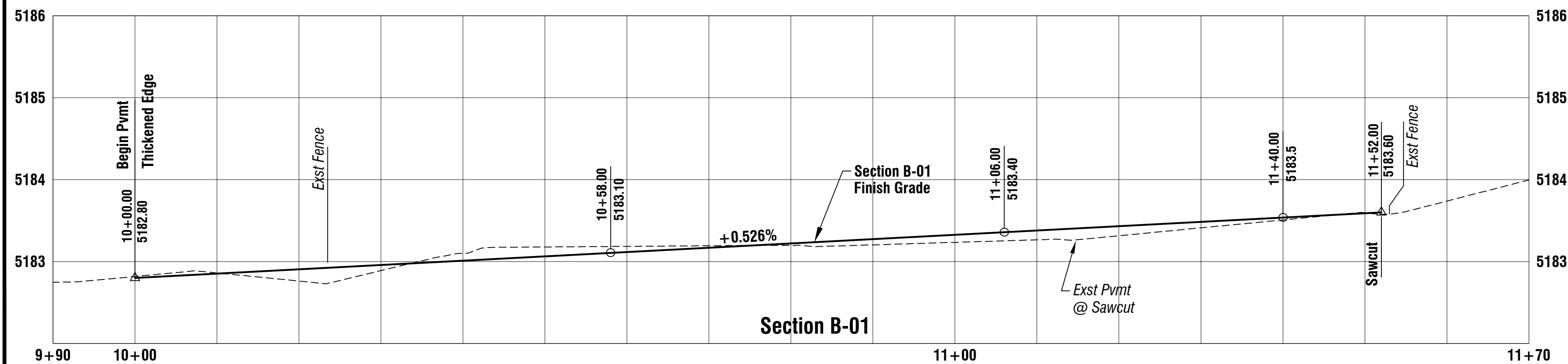
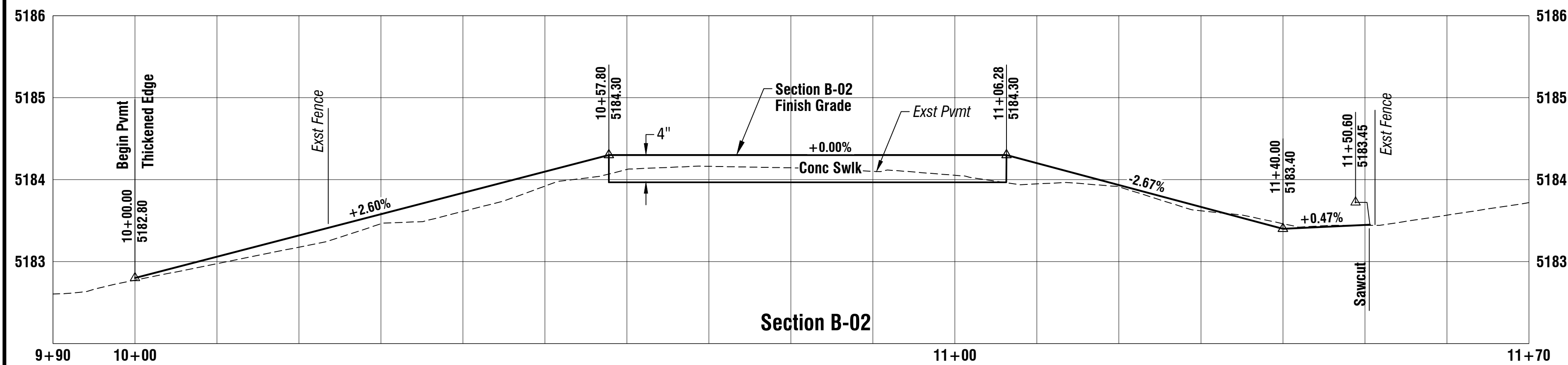
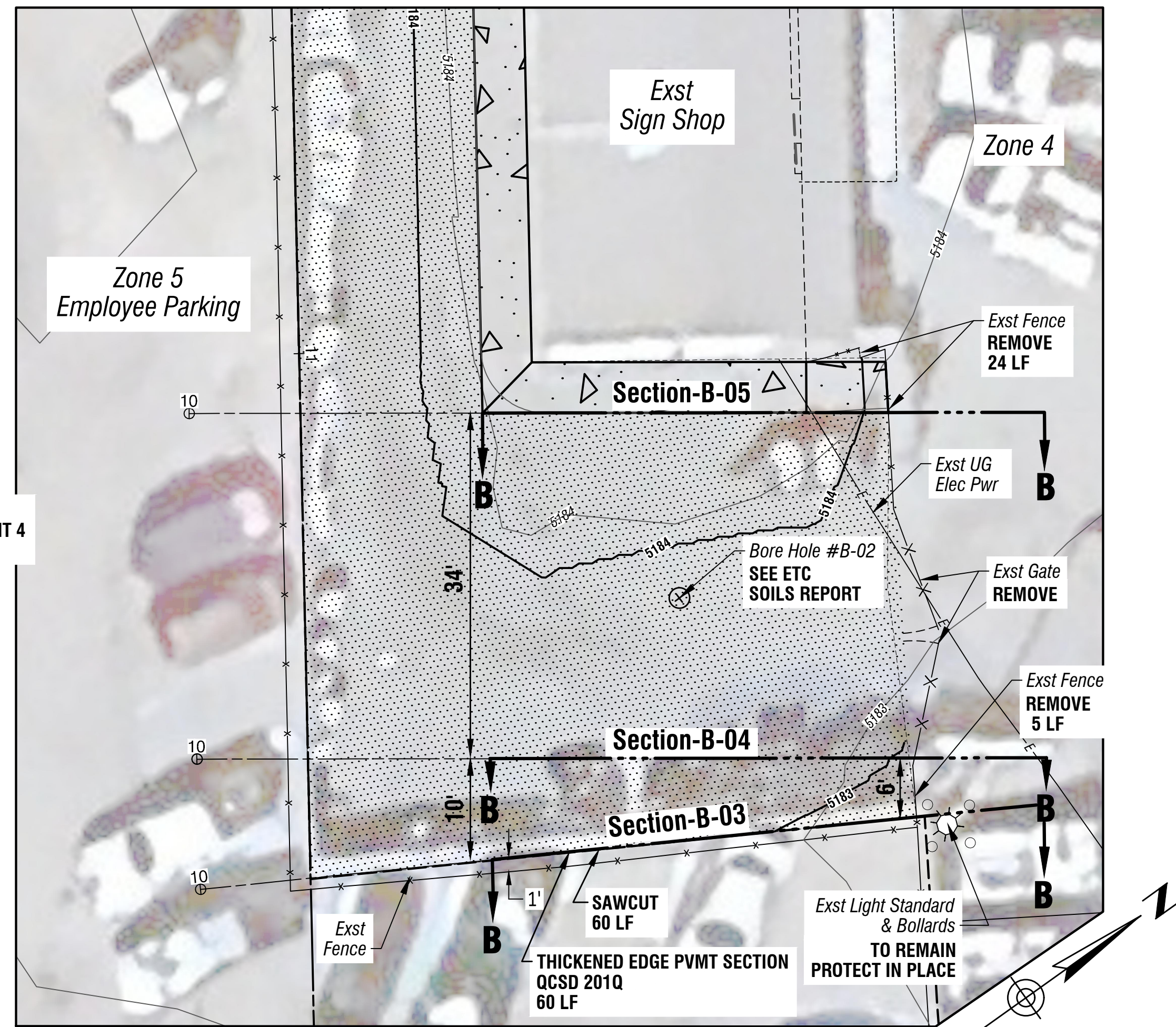
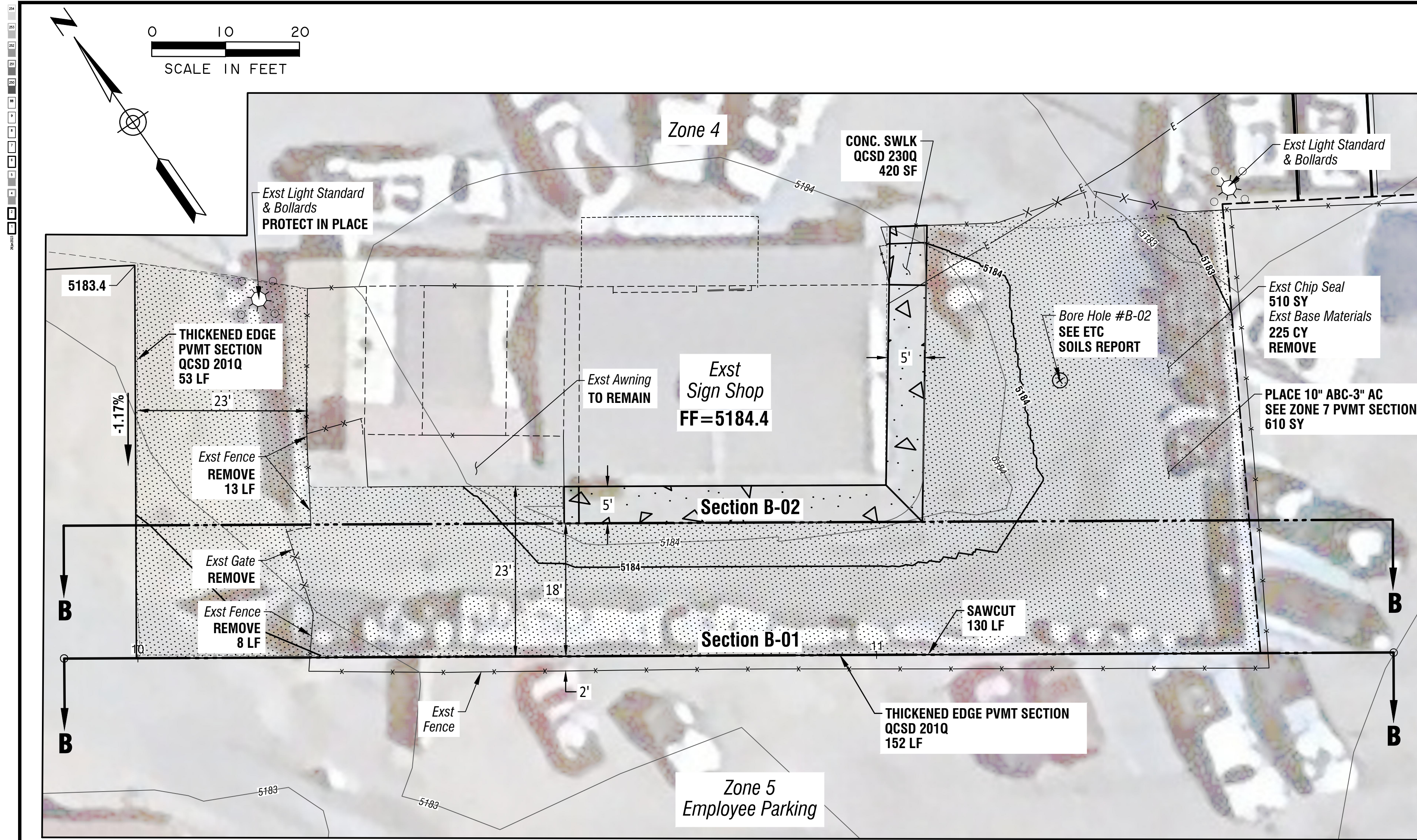


DWG. NO. 554xfrpv		DATE: Jan 2025		SHEET NO. 7 of 12	
Transfer Station Pavement Improvements Phase 2 Site Plan					
DVA & ASSOCIATES, INC.					
PLANNING & ASSOCIATES, INC. 310 East Union Street P.O. Box 144 Bismarck, ND 58103 Email: mail@dvaandci.com					
PREPARED BY gth		CHECKED BY gmb		FOR COP	
The private engineer signing these plans is responsible for the accuracy of the design hereon. In the event of discrepancies arising after city approval or during construction, the engineer shall be responsible for determining an acceptable solution and revising the plans for approval by the City of Prescott.					
APPRV. DATE		CITY		REVISIONS	
NO.		BY DATE		ENGINEER	
A		-		-	

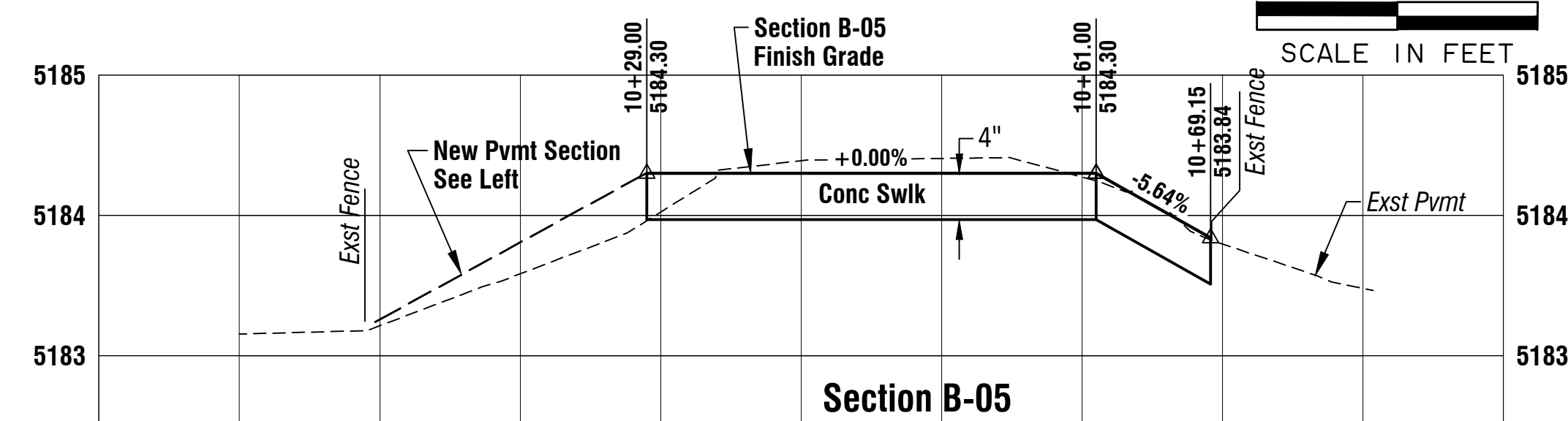
CPW 2407-001



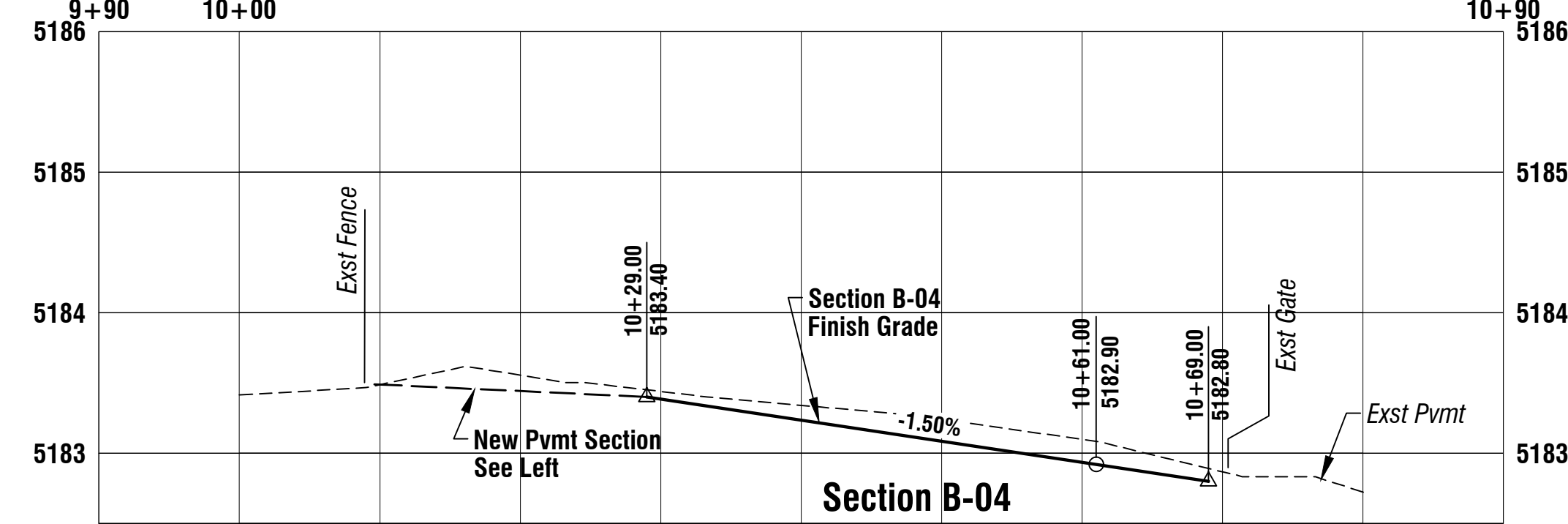
k:\554\554xfrpv\c3d\sheet\ep-554xfrpv-zone 7 pavement.dwg



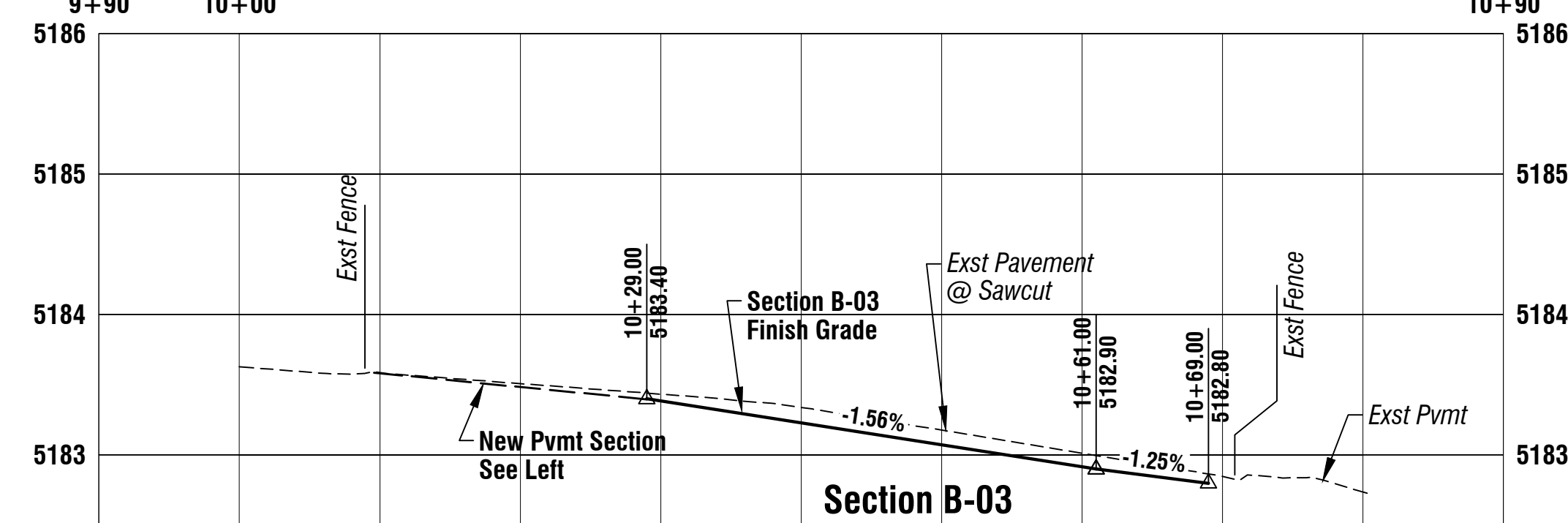
SECTIONS B-B



Section B-05



Section B-04



Section B-03

SECTIONS B-B

DWG. NO.
554xfrpv

DATE:
Jan 2025

SHEET NO.
9

OF 12

DATA & ASSOCIATES, INC.

Transfer Station Pavement Improvements Phase 2

Zone 7 Pavement

DAVA & ASSOCIATES, INC.

PLANNING
ENGINEERING
SURVEYING

310 East Union Street
Prescott, AZ 86303
Email: mail@datavil.com

FOR
COP

CHECKED BY
gmb

PREPARED BY
gth

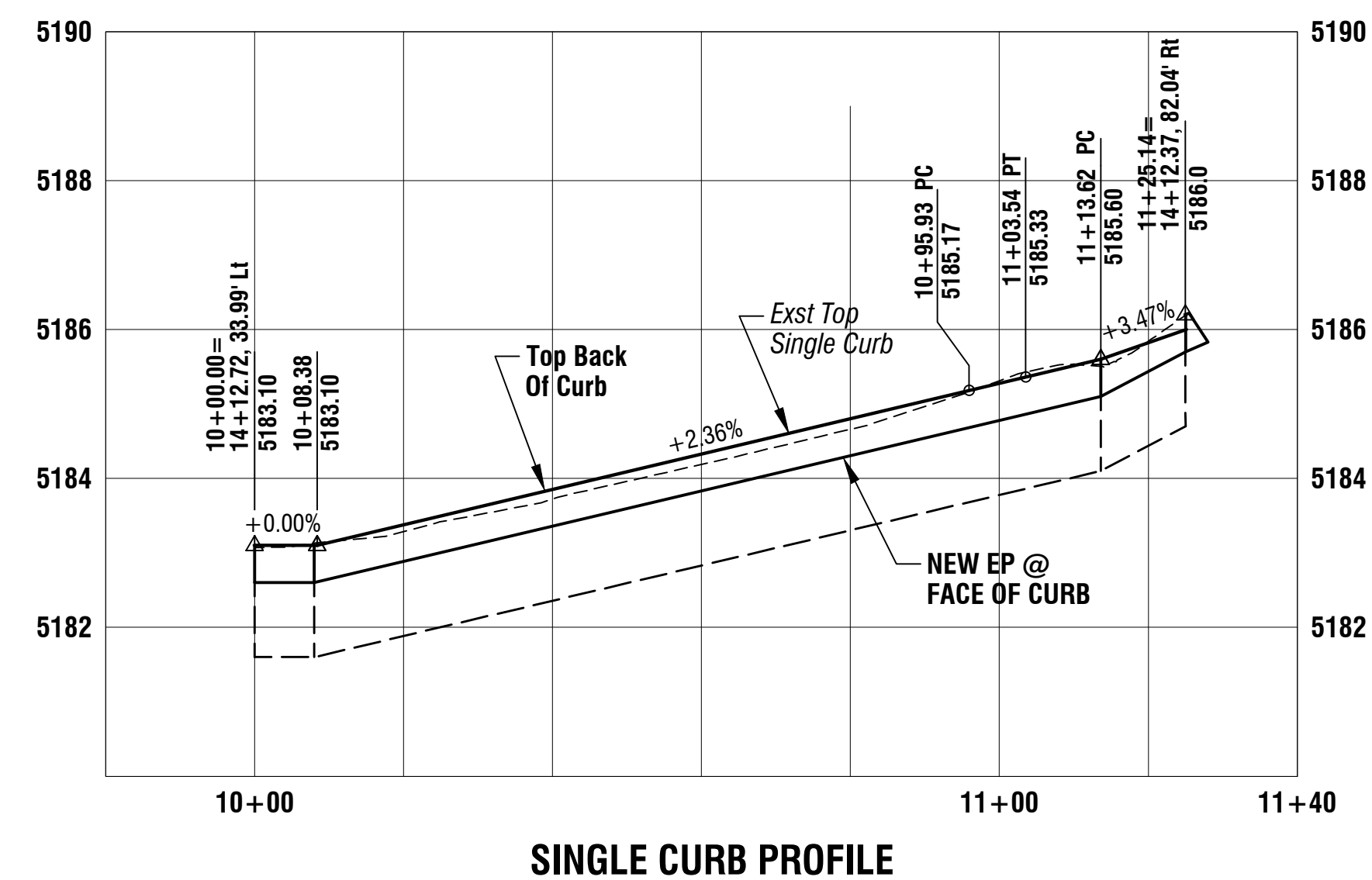
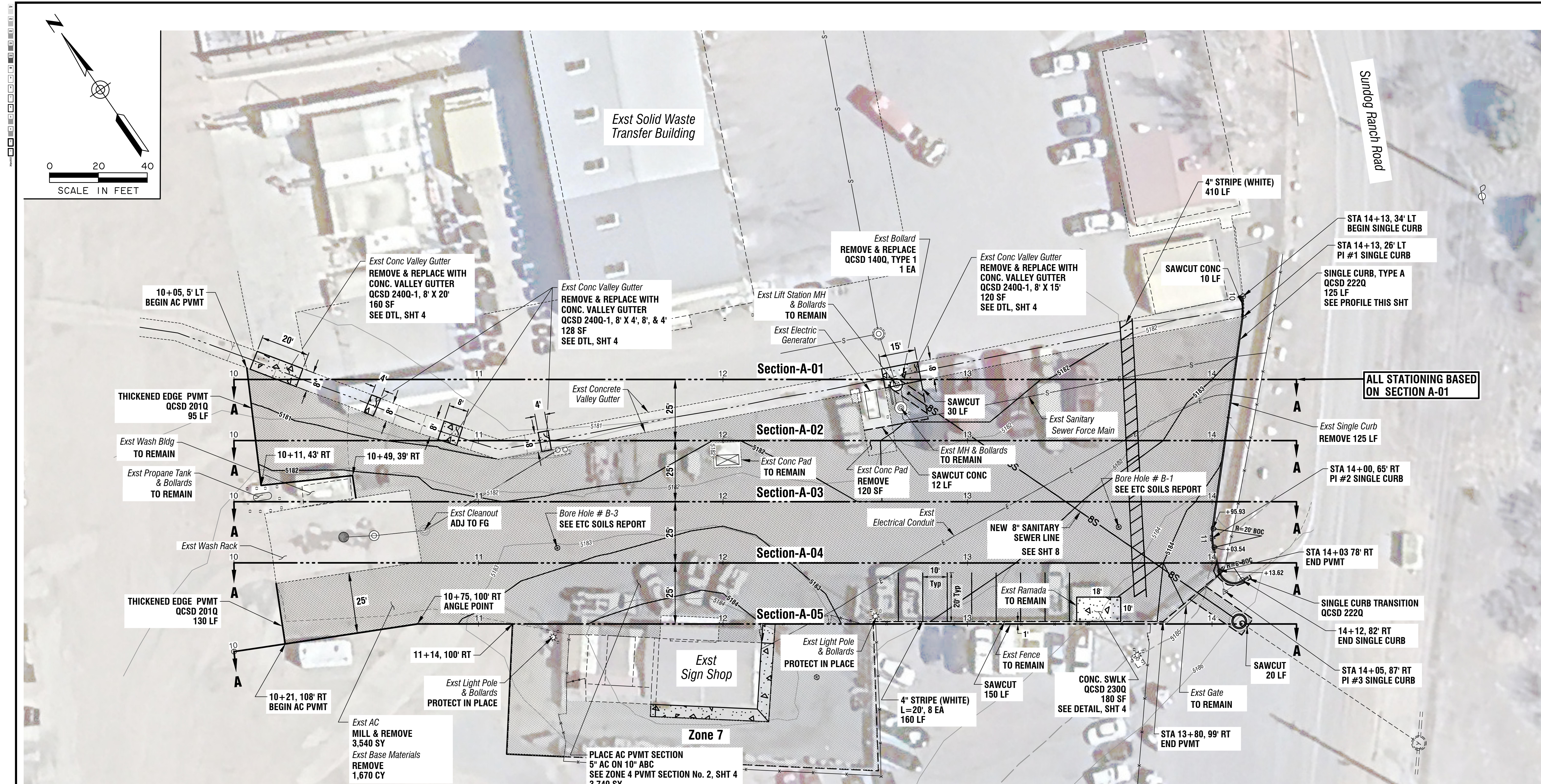
Professional Engineer (Civil)
No. 10008
GORDON M.
BOWERS
1989 AZ
1989 AZ
1989 AZ

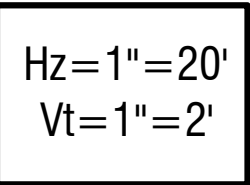
John Bowers

Note:
The private engineer signing these plans is responsible for the accuracy of the design hereon, in the event of discrepancies arising from construction or during construction, the engineer shall be responsible for determining an acceptable solution and revising the plans for approval by the City of Prescott.

REVISIONS

NO.	BY	DATE	CITY
1			
2			
3			
4			
5			
6			
7			
8			
9			
10			

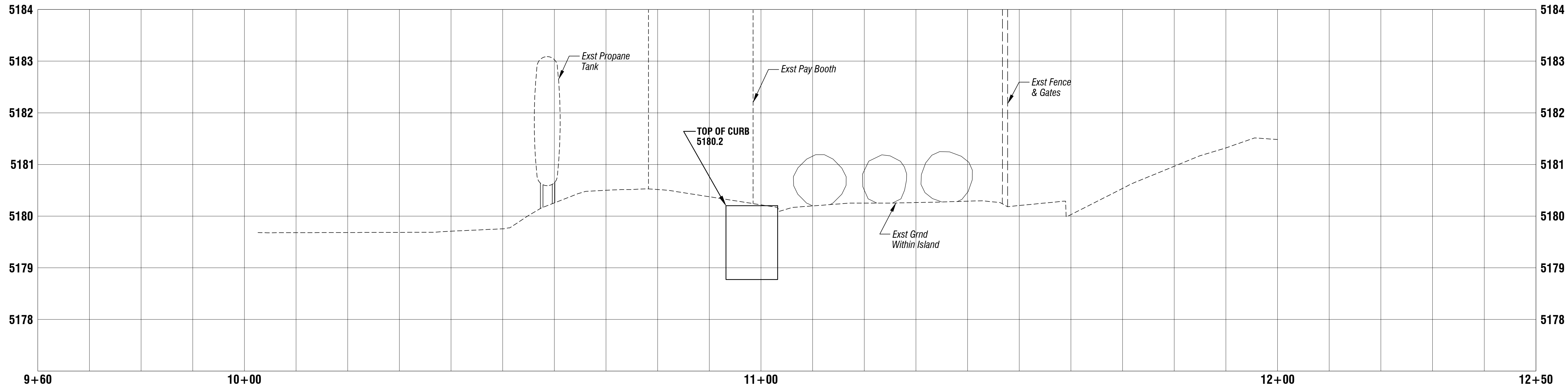
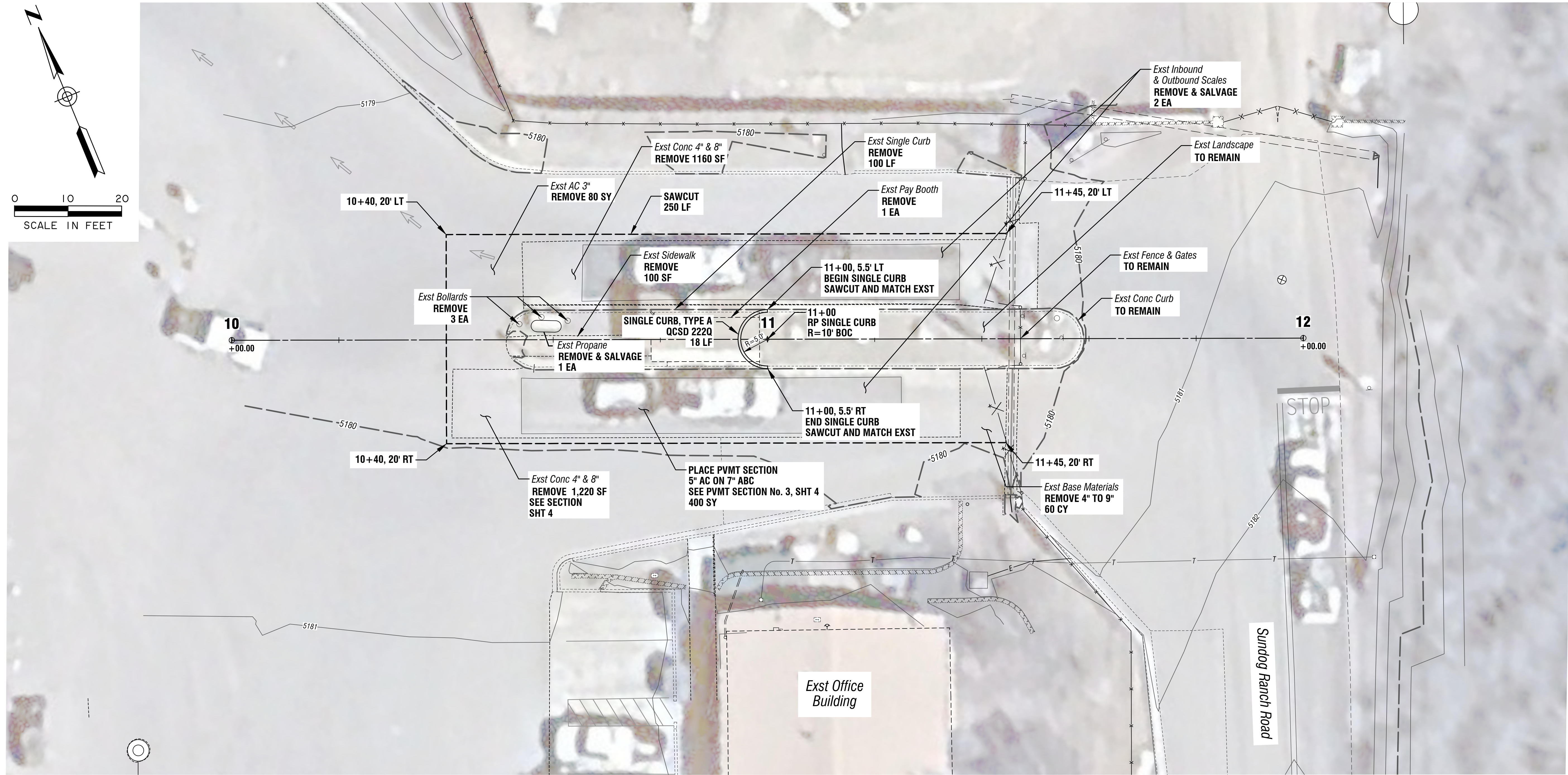
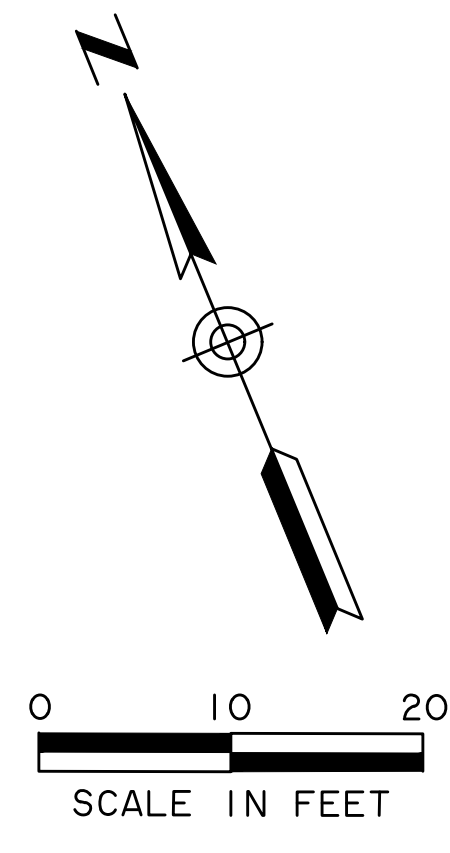




SOCIATES, INC.
310 East Union Street
Prescott, AZ 86303
(928) 778 - 7587
Email: mail@DavaCivil.com

DWG. NO. 554xtrpv
DATE: Jan 2025
SHEET NO. 11 OF 12

k:\554\554xfrpv\c3d\sheet\pay booth & scales.dwg



DWG. NO. 554xfrpv		DATE: Jan 2025		SHEET NO. 12 OF 12	
Transfer Station Pavement Improvements Phase 2 Scales & Pay Booth Removal					
DWA & ASSOCIATES, INC.		DWA & ASSOCIATES, INC. PLANNING & ASSOCIATES, INC. ENGINEERING SURVEYING 310 East Union Street Prescott, AZ 86303 Email: mail@dwaaz.com		FOR COP gmb gth	
Note: The private engineer signing these plans is responsible for the accuracy of the design herein. In the event of discrepancies arising after city approval or during construction, the private engineer shall be responsible for determining an acceptable solution and revising the plans for approval by the City of Prescott.		APPRV. DATE		CITY	
BY DATE		REVISIONS		ENGINEER	
NO.		BY DATE		ENGINEER	

CPW 2407-001